

# Baptist State Convention of NC, Inc.

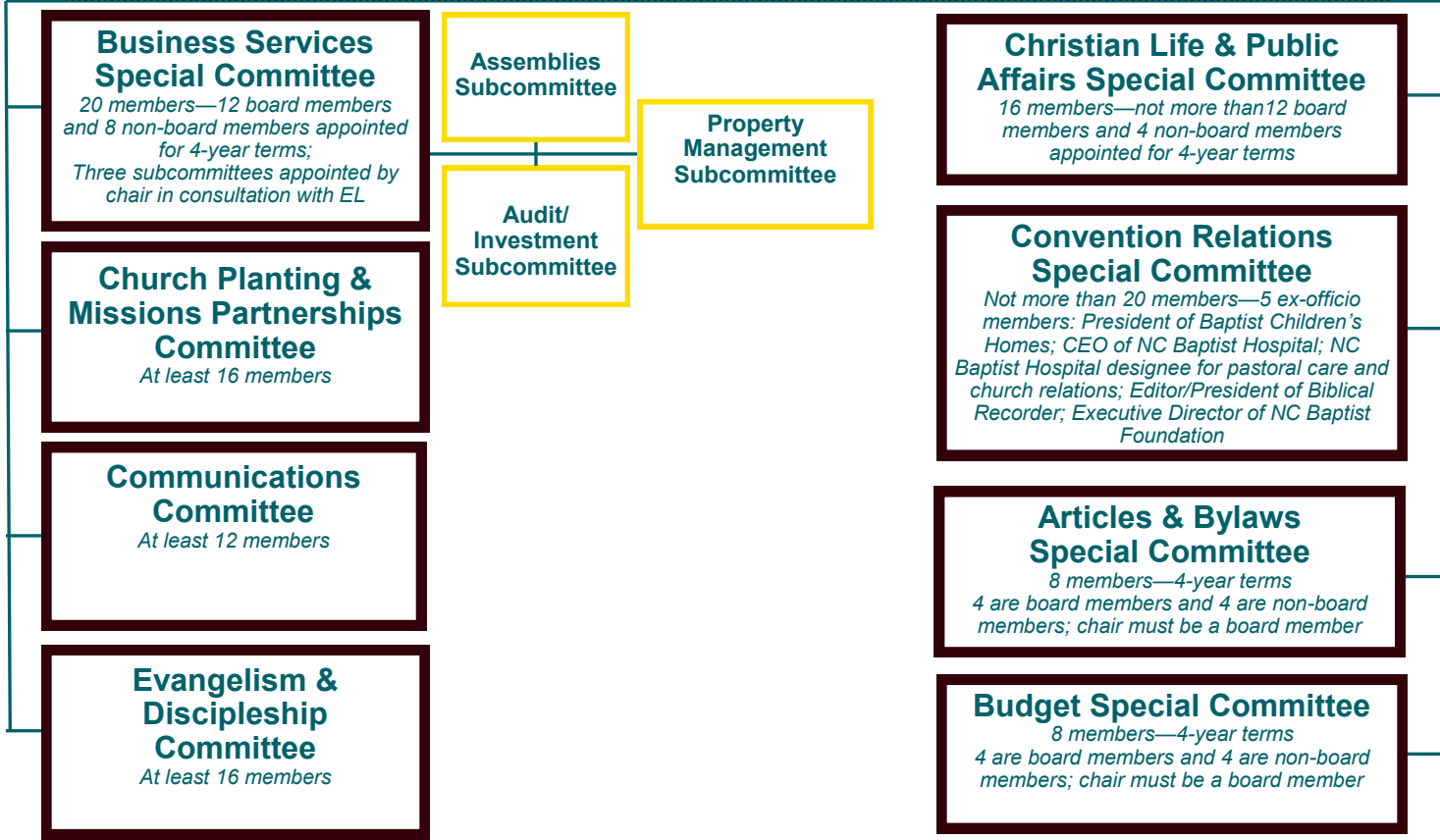
## Organization of the Board

**Board of Directors**  
*The Board membership totals are determined by church membership within the regions as reported through the ACP;  
 Board members are elected to serve a 4-year term, unless they are filling an unexpired term*

**Board President**  
*Elected by the Board in September for a 1-year term*

**Board Vice President**  
*Elected by the Board in September for a 1-year term*

*Appointments to the Board Committees are made by the President and Vice President unless otherwise noted*



**Business Services Special Committee**  
*20 members—12 board members and 8 non-board members appointed for 4-year terms;  
 Three subcommittees appointed by chair in consultation with EL*

**Church Planting & Missions Partnerships Committee**  
*At least 16 members*

**Communications Committee**  
*At least 12 members*

**Evangelism & Discipleship Committee**  
*At least 16 members*

**Assemblies Subcommittee**

**Audit/Investment Subcommittee**

**Property Management Subcommittee**

**Christian Life & Public Affairs Special Committee**  
*16 members—not more than 12 board members and 4 non-board members appointed for 4-year terms*

**Convention Relations Special Committee**  
*Not more than 20 members—5 ex-officio members: President of Baptist Children's Homes; CEO of NC Baptist Hospital; NC Baptist Hospital designee for pastoral care and church relations; Editor/President of Biblical Recorder; Executive Director of NC Baptist Foundation*

**Articles & Bylaws Special Committee**  
*8 members—4-year terms  
 4 are board members and 4 are non-board members; chair must be a board member*

**Budget Special Committee**  
*8 members—4-year terms  
 4 are board members and 4 are non-board members; chair must be a board member*